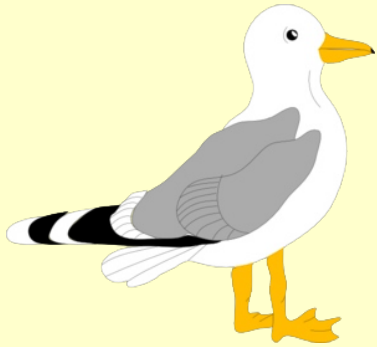


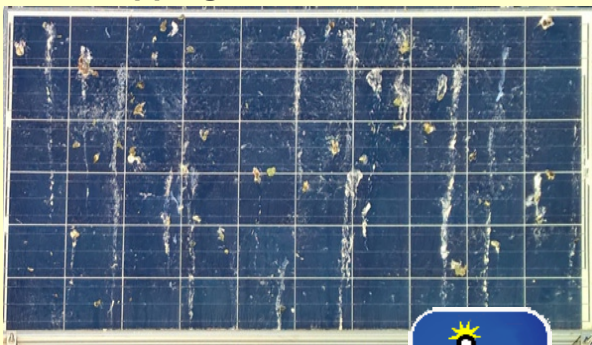
## Poop Cam



Recently a customer was wondering why their solar generation site suddenly started producing less than expected even on sunny days. A look at their SnoCam photos quickly revealed the cause....bird droppings! Although the SnoCam option will not be renamed to PoopCam, having a camera is useful for determining how site conditions are affecting output like snow coverage, weather damage, dirt buildup or other unexpected conditions. Daily photos are stored for the system lifetime. 2 weeks of 24/7 video is also available for reviewing events for insurance claims. Order the SnoCam option for new sites or retrofit it on existing SolarVu systems to see what gages and sensors can't tell you.

*Call it what you want, a SnoCam is useful for viewing site conditions to diagnose problems before sending expensive O&M resources to the site.*

Bird droppings, dirt



Live SnoCam

Snow Cover



Date: Feb 13, 2016, Sat 12:01 PM  
 Daily Energy: 96.0 kWh, Revenue: \$68  
 Daily Insolation: 5,769 Wh/m<sup>2</sup>, 5.8 FSH  
 Peak Irradiance: 919 W/m<sup>2</sup> @ 12:47 PM  
 Panel Min/Max Temperature: -25°C / -12°C

< Prev Day 24 Hour Next Day >

Weather Damage



## Install a SnoCam<sup>™</sup> - Pictures Tell the Story

- ✓ Live site photos, 1-4 cameras
- ✓ Lifetime daily photo storage
- ✓ View photos by day or full month
- ✓ 2 weeks of 24/7 video for live events
- ✓ Check how weather is impacting output
- ✓ Site conditions shown at time of photo